

## Learning with manga

## Otsukimi Moon Viewing



Since ancient times in Japan, people have cherished the custom of appreciating the beautiful moon that floats in the autumn sky. This custom, called *otsukimi*, or moon viewing, celebrates the moon that appears on the fifteenth night of the eighth month in the lunar calendar (*jugoya*), considered the most beautiful of the year. On this day, people express gratitude for the autumn harvest by decorating their homes with pampas grass and enjoying special “moon-viewing” rice dumplings called *tsukimi dango* while admiring the radiant moon.

Additionally, in Japan, the dark patterns on the moon’s surface are often said to resemble a rabbit pounding mochi to make rice cakes, though many other myths and legends about the moon can be found around the world. In 2025, the *jugoya* falls on October 6. We hope you will take a moment on this day to gaze at the most beautiful moon of the year!

“とも” provides helpful advice on living in Japan, tips for learning the Japanese language, and other such information, in Japanese with furigana and nine foreign languages (Vietnamese, Chinese, Filipino, Indonesian, Thai, Cambodian, Burmese, Mongolian, and English).

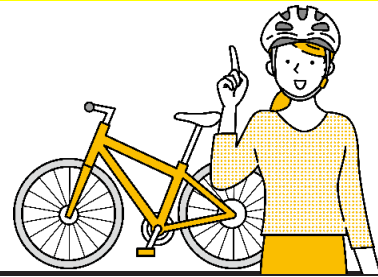
(<https://www.jitco.or.jp/ja/tomo/>)





## Keep Safe! Bicycle Traffic Rules

Fines will be imposed  
for traffic violations starting  
in April 2026



Many people use bicycles frequently as a convenient means of transportation. To ensure the safe use of bicycles and prevent traffic accidents, let us review the proper traffic rules once again.

### Five Important Rules for Riding a Bicycle

- 1** Ride on the left side of the road.  
Bicycles are considered vehicles, so they must travel on the left side of the road, although there are some exceptions. Even where bicycles are permitted on sidewalks, pedestrians always have the right of way, so take care to ride slowly on the side nearest the road.
- 2** At intersections, obey traffic signals and stop signs, and be sure to check for safety.
- 3** Use a light at night.
- 4** Do not drink and ride a bicycle.
- 5** Make it a habit to wear a helmet to reduce the risk of injury in the event of an accident.



In addition to the above, using a mobile phone or holding an umbrella while riding a bicycle is also not allowed.

**Violations  
will be fined!**



Any violation of the rules can result in a penalty. From April 2026, cyclists will also be ticketed just like drivers of cars and motorcycles. For example, using a mobile phone while riding will incur a fine of 12,000 yen, and riding at night without a light will incur a fine of 5,000 yen.  
To avoid accidents and penalties alike, remember to follow the traffic rules and ride safely.

出典：「広報けいしちょう」春号（第111号）より抜粋し、JITCOが作成

### Learn by watching

The JITCO Online Shop offers the DVD “*Learning about Traffic Safety in Japan through Q&A: Rules for Pedestrians and Bicycles*” in five languages: Japanese, Chinese, English, Indonesian, and Vietnamese. We hope you will find it useful.



Q&Aで覚える日本の交通安全  
～歩行と自転車のルール～

## Are you prepared for a disaster?



No one knows when or where a disaster might occur, so you need to be prepared in advance. Pack a backpack or other similar bag with the items you would need in an emergency and leave it where you can take it with you quickly.

### Prepare your emergency supplies

- ☒ **Drinking water**
- ☒ **Food** Stock food that can be eaten without cooking, such as canned goods, hardtack, and biscuits.
- ☒ **Daily necessities** Flashlight, portable gas stove, power bank, etc.
- ☒ **Sanitary items** Underwear, portable toilet, wet wipes, toothbrush and toothpaste, face masks, feminine hygiene products, etc.
- ☒ **First-aid supplies** Bandages, disinfectant. Also include any regular medicines you take.



### Know the difference: —“Evacuation site” and “Evacuation shelter”—

**Evacuation site** is a place to escape to.

These are locations where people should escape to temporarily when a major disaster occurs. Schoolyards and parks are designated as such.

**Evacuation shelter** is a place to live after escaping.

These are places where people can stay for a certain period of time after a disaster, when it is dangerous to remain at home due to an earthquake, typhoon, or other subsequent disasters, or when the loss of lifelines such as gas, electricity, and water make living at home difficult. Evacuation shelters are open to everyone, but it is important that everyone follows the rules.

You can check the locations of evacuation sites and shelters near you by checking the website or hazard map of your municipality.

政府広報オンライン (<https://www.gov-online.go.jp/article/201108/entry-8072.html>) より抜粋し JITCO が作成

とも

2025年10月 秋季号

2025年10月1日発行

発行

電話

JITCO ホームページ

公益財団法人 国際人材協力機構 (JITCO)

総務部広報室

〒108-0023

東京都港区芝浦2-11-5

五十嵐ビルディング

03-4306-1166 (ダイヤルイン)

<https://www.jitco.or.jp/>



jitco.official



@jitco\_official